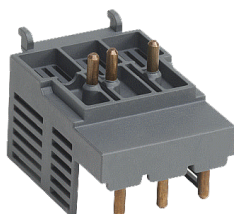


PRODUCT-DETAILS

PSR30-MS132

PSR30-MS132 Connection Kit



General Information

Global Commercial Alias	PSR30-MS132
Extended Product Type	PSR30-MS132
Product ID	1SFA896212R1001
ABB Type Designation	PSR30-MS132
EAN	7320500382561
Catalog Description	PSR30-MS132 Connection Kit
Long Description	Connection kit for PSR25...PSR30 with MS132-12...MS132-32

Ordering

Minimum Order Quantity	1 piece
Customs Tariff Number	85371091
Product Main Type	PSR30-MS132

Popular Downloads

Data Sheet, Technical Information	1SFC132012C0201
Instructions and Manuals	1SFC132031M0001
CAD Dimensional Drawing	2CDC001079B0201

Dimensions

Product Net Width	67 mm
Product Net Depth / Length	45 mm
Product Net Height	46 mm
Product Net Weight	0.03 kg

Technical

Suitable For	PSR(C)25...PSR(C)30 with MS132-12 ... MS132-32
Suitable for Product Class	Softstarters

Environmental

Ambient Air Temperature	Operation -25 ... +60 °C Storage -40 ... +70 °C
RoHS Information	1SFC132036D0201
WEEE B2C / B2B	Business To Business
WEEE Category	5. Small Equipment (No External Dimension More Than 50 cm)

Certificates and Declarations (Document Number)

Declaration of Conformity - CE	2CMT2021-006217
Instructions and Manuals	1SFC132031M0001
RoHS Information	1SFC132036D0201

Container Information

Package Level 1 Units	box 1 piece
Package Level 1 Width	67 mm
Package Level 1 Depth / Length	45 mm
Package Level 1 Height	46 mm
Package Level 1 Gross Weight	0.04 kg
Package Level 1 EAN	7320500382561

Classifications

eClass	V11.0 : 27371392
E-Number (Finland)	3706527
E-Number (Norway)	4182003
E-Number (Sweden)	3302033
ETIM 7	EC002498 - Accessories for low-voltage switch technology
ETIM 8	EC002498 - Accessories/spare parts for low-voltage switch technology
Object Classification Code	Q
UNSPSC	39121521

Categories

Drives → Softstarters → Softstarters Accessories → Accessories for Softstarters

Low Voltage Products and Systems → Control Products → Softstarters → Softstarters Accessories → Accessories for Softstarters

