

SETRON, Fuse switch disconnecter 3NP1, 3-pole, NH3, 630 A, for assembly and installation on mounting plate, flat terminal, cover level 70 mm

Model	
product designation	3NP1 fuse switch disconnecter
design of the safety monitoring	Without
design of the load switch strip form	No
type of the driving mechanism motor drive	No
General technical data	
number of poles	3
type of device	For assembly and installation on mounting plate
size of disconnecting link	3 and 2
size of fuse link	NH2, NH3
let-through current with closed switch maximum	60 kA
mechanical service life (operating cycles) typical	1 000
I <sup>2</sup> t value with closed switch maximum	5 400 kA <sup>2</sup> .s
power factor	
• at AC-22 B	0.65
• at AC-23 B	0.35
• with capacitive load	-0.25
fuse system	LV HRC fuse
degree of pollution	3
Voltage	
insulation voltage	
• rated value	690 V
• with degree of pollution 3 at AC rated value	690 V
• with degree of pollution 2 at AC rated value	1 000 V
power factor at AC-21 B	0.95
surge voltage resistance rated value	8 kV
operational current	
• at 35 °C rated value	630 A
• at 40 °C rated value	610 A
• at 45 °C rated value	575 A
• at 50 °C rated value	555 A
• at 55 °C rated value	530 A
• at AC-21 B at 240 V rated value	630 A
• at AC-21 B at 400 V rated value	630 A
• at AC-21 B at 500 V rated value	630 A
• at AC-21 B at 690 V rated value	630 A
• at AC-22 B at 240 V rated value	630 A
• at AC-22 B at 400 V rated value	630 A
• at AC-22 B at 500 V rated value	630 A
• at AC-22 B at 690 V rated value	500 A

<ul style="list-style-type: none"> <li>• at AC-23 B at 690 V rated value</li> <li>• at AC-23 B at 500 V rated value</li> <li>• at AC-23 B at 400 V rated value</li> <li>• at AC-23 B at 240 V rated value</li> <li>• at DC-21 B at 120 V rated value</li> <li>• at DC-21 B at 240 V rated value</li> <li>• at DC-21 B at 440 V rated value</li> <li>• at DC-22 B at 120 V rated value</li> <li>• at DC-22 B at 240 V rated value</li> <li>• at DC-22 B at 440 V rated value</li> <li>• at DC-23 B at 120 V rated value</li> <li>• at DC-23 B at 240 V rated value</li> <li>• at DC-23 B at 440 V rated value</li> </ul>	200 A 500 A 630 A 630 A 630 A 630 A 630 A 630 A 630 A 500 A 400 A 400 A 250 A
let-through current with high-speed activation maximum permissible	50 kA
operating voltage <ul style="list-style-type: none"> <li>• at AC rated value maximum</li> <li>• at DC rated value</li> <li>• at DC rated value maximum</li> </ul>	690 V 440 V 440 V
<b>Protection class</b>	
protection class IP <ul style="list-style-type: none"> <li>• with closed switch with cover or cable lug cover</li> <li>• with closed switch without cover or cable lug cover</li> <li>• open</li> </ul>	IP40 IP30 IP20
<b>Dissipation</b>	
power loss [W] <ul style="list-style-type: none"> <li>• with conventional rated thermal current without fuse per pole</li> <li>• with conventional rated thermal current without fuse per device</li> <li>• for rated value of the current at AC in hot operating state per pole</li> <li>• of the fuse per fuse maximum</li> </ul>	30 W 90 W 78 W 48 W
<b>Main circuit</b>	
operational current <ul style="list-style-type: none"> <li>• rated value</li> <li>• with capacitive load at 400 V rated value</li> <li>• with capacitive load at 500 V rated value</li> </ul>	630 A 72 A 55 A
<b>Auxiliary circuit</b>	
number of CO contacts for auxiliary contacts	0
number of NC contacts for auxiliary contacts	0
number of NO contacts for auxiliary contacts	0
<b>Suitability</b>	
suitability for use <ul style="list-style-type: none"> <li>• main switch</li> <li>• switch disconnecter</li> <li>• EMERGENCY OFF switch</li> <li>• safety switch</li> <li>• maintenance/repair switch</li> </ul>	No Yes No Yes Yes
<b>Product details</b>	
product component <ul style="list-style-type: none"> <li>• undervoltage release</li> <li>• undervoltage release with leading contact</li> </ul>	No No
product feature sealable	Yes
product extension auxiliary switch	Yes
<b>product extension optional</b> <ul style="list-style-type: none"> <li>• locking capability</li> <li>• phase failure monitoring</li> <li>• fuse monitoring</li> <li>• voltage trigger</li> <li>• overvoltage protection monitoring</li> </ul>	Yes Yes Yes No Yes

Product function	
product function overvoltage protection monitoring	No
Connections	
arrangement of electrical connectors for main current circuit	other
connectable conductor cross-section for main contacts	
• solid or stranded minimum	120 mm²
• solid or stranded maximum	300 mm²
• stranded minimum	120 mm²
• stranded maximum	300 mm²
tightening torque with screw-type terminals	
• minimum	10 N·m
• maximum	12 N·m
type of connectable conductor cross-sections of the laminated conductors maximum	40 x 18 mm
type of connection technology	Flat terminal
Mechanical Design	
height	306 mm
width	249.4 mm
depth	138.5 mm
fastening method	mounting plate
fastening method	
• floor mounting	Yes
• rail mounting	No
mounting position	horizontal/vertical
net weight	4.63 kg
Environmental conditions	
ambient temperature during operation	
• minimum	-25 °C
• maximum	55 °C
ambient temperature during storage	
• minimum	-50 °C
• maximum	80 °C
Certificates	
reference code according to IEC 81346-2	Q
Approvals Certificates	
General Product Approval	

[Confirmation](#)



General Product Approval	Test Certificates	Marine / Shipping
<a href="#">Miscellaneous</a> 	<a href="#">Special Test Certificate</a> 	<a href="#">Type Test Certificates/Test Report</a> 
other	Environment	

[Miscellaneous](#)

[Confirmation](#)

[Environmental Confirmations](#)

[Environmental Confirmations](#)

Further information
Information on the packaging <a href="https://support.industry.siemens.com/cs/ww/en/view/109813875">https://support.industry.siemens.com/cs/ww/en/view/109813875</a> Information- and Downloadcenter (Catalogs, Brochures,...) <a href="http://www.siemens.com/lowvoltage/catalogs">http://www.siemens.com/lowvoltage/catalogs</a>

Industry Mall (Online ordering system)

<https://mall.industry.siemens.com/mall/en/en/Catalog/product?mlfb=3NP1163-1DA10>

Service&Support (Manuals, Certificates, Characteristics, FAQs,...)

<https://support.industry.siemens.com/cs/ww/en/ps/3NP1163-1DA10>

Image database (product images, 2D dimension drawings, 3D models, device circuit diagrams, ...)

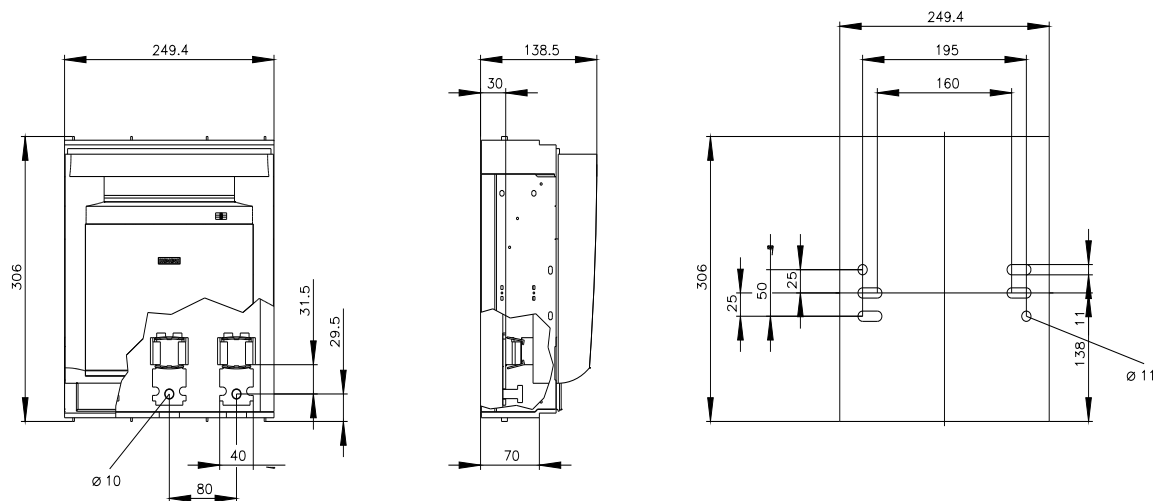
[http://www.automation.siemens.com/bilddb/cax\\_en.aspx?mlfb=3NP1163-1DA10](http://www.automation.siemens.com/bilddb/cax_en.aspx?mlfb=3NP1163-1DA10)

CAX-Online-Generator

<http://www.siemens.com/cax>

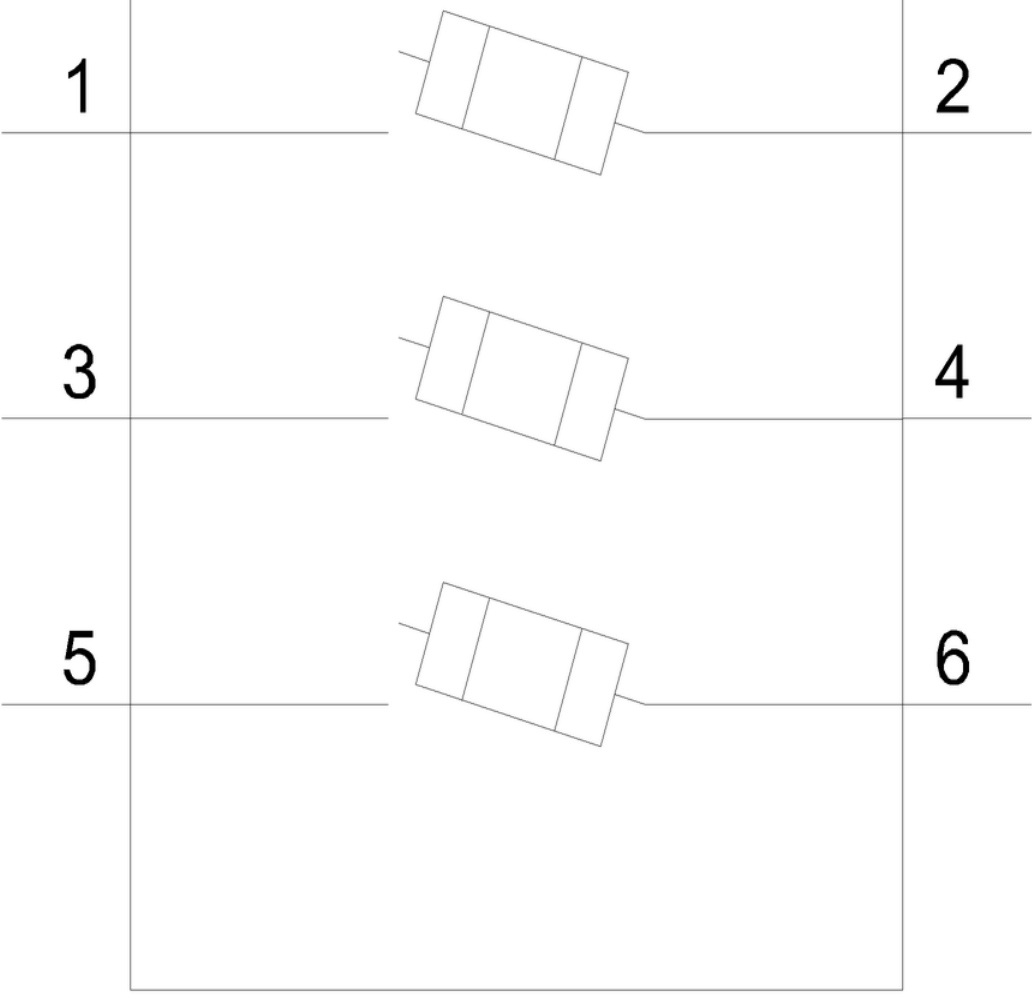
Tender specifications

<http://www.siemens.com/specifications>





CB



last modified:

12/16/2020 

