



Switch disconnector with fuse 160 A, Size 2, 3-pole for LV HRC fuse Sz. 000 and 00 Front operating mechanism left Complete unit with direct operating mechanism gray flat terminal

Model	
product brand name	SETRON
product designation	3KF switch disconnector with fuses
design of the product	3KF switch disconnector with fuses
product variations	3KF NH
design of the actuating element	manual operating mechanism
design of handle	Direct operating mechanism, gray
direction of actuation	from the front
type of the driving mechanism motor drive	No
number of poles	3
size of disconnecting link	00 and 000
size of switch disconnector	2
size of fuse link	NH000, NH00
mechanical service life (operating cycles) typical	12 000
electrical endurance (operating cycles)	
• at AC-23 A at 440 V	8 000
• at AC-23 A at 690 V	5 000
• at DC-23 A at 440 V	1 000
I <sup>2</sup> t value	
• with closed switch for combination switch + fuse at 500 V maximum	150 600 A <sup>2</sup> ·s
• with closed switch for combination switch + fuse at 400 V maximum	150 600 A <sup>2</sup> ·s
• with closed switch at 690 V for combination switch + gG fuse maximum	89 640 A <sup>2</sup> ·s
• of the fuse at 500 V maximum permissible	223 000 A <sup>2</sup> ·s
• of the gG fuse at 690 V maximum permissible	360 000 A <sup>2</sup> ·s
• of the aM fuse at 690 V maximum permissible	565 000 A <sup>2</sup> ·s
position of the switch operating mechanism	left
fuse system	LV HRC fuse
overvoltage category	IV
operating voltage with current paths in series	
• with degree of pollution 2 at DC rated value	440 / 3
• with degree of pollution 3 at DC rated value	440 / 3
surge voltage resistance rated value	12 kV
Supply voltage	
operating voltage at AC rated value maximum	690 V
Protection class	
protection class IP	IP00
protection class IP	
• with closed switch with cover or cable lug cover	IP20

• on the front	IP00
<b>Dissipation</b>	
power loss [W]	
• with conventional rated thermal current per pole	7.2 W
• with conventional rated thermal current per device	21.6 W
• with conventional rated thermal current without fuse per pole	7.2 W
• with conventional rated thermal current without fuse per device	21.6 W
• for rated value of the current at AC in hot operating state per pole	7.2 W
• of the fuse per fuse maximum	12 W
<b>Main circuit</b>	
operating power at AC-23 A at 500 V rated value	110 kW
operational current rated value	160 A
<b>Auxiliary circuit</b>	
number of connected NC contacts for auxiliary contacts	0
number of connected NO contacts for auxiliary contacts	0
number of connected CO contacts for auxiliary contacts	0
number of CO contacts for auxiliary contacts	0
number of NC contacts for auxiliary contacts	6
number of NO contacts for auxiliary contacts	6
suitability for use	
• main switch	Yes
• switch disconnecter	Yes
• EMERGENCY OFF switch	No
• safety switch	Yes
• maintenance/repair switch	Yes
product component	
• voltage trigger	No
• undervoltage release	No
• undervoltage release with leading contact	No
product feature sealable	Yes
product extension auxiliary switch	Yes
<b>product extension optional</b>	
• locking capability	No
• motor drive	No
• fuse monitoring	Yes
product function	
• fuse monitoring	No
• overvoltage protection monitoring	No
<b>Short circuit</b>	
short-circuit current making capacity (I <sub>cm</sub> ) for switch disconnecter at 690 V AC/440 V DC without fuse link rated value minimum	7.65 kA
conditional short-circuit current with line-side fuse protection	
• at 500 V by gG fuse rated value	100 kA
• at 690 V by gG fuse rated value	100 kA
<b>Connections</b>	
arrangement of electrical connectors for main current circuit	Top and bottom
tightening torque with screw-type terminals	
• minimum	15 N·m
• maximum	22 N·m
type of connectable conductor cross-sections for aluminum conductor stranded with lug	1x (2.5 ... 95 mm²), 2x (2.5 ... 50 mm²)
type of connectable conductor cross-sections	
• for copper busbar	1x (20 x 3 mm²)
type of connectable conductor cross-sections for copper conductor	
• stranded with lug according to DIN 46234	1x (2.5 ... 95 mm²), 2x (2.5 ... 50 mm²)
• stranded with lug according to DIN 46235	1x (25 ... 70 mm²), 2x (25 ... 50 mm²)
type of electrical connection for main current circuit	flat connector

Mechanical Design	
height	150 mm
width	190 mm
depth	206.5 mm
fastening method	floor mounting
fastening method	
• 4-hole front mounting	No
• front mounting with central attachment	No
• rail mounting	No
mounting position	any
net weight	2 500 g

Environmental conditions	
ambient temperature during operation	
• minimum	-25 °C
• maximum	70 °C
ambient temperature during storage	
• minimum	-50 °C
• maximum	80 °C

Approvals Certificates	
General Product Approval	



[Confirmation](#)



[Miscellaneous](#)

General Product Approval	Test Certificates	Marine / Shipping	other	Environment
--------------------------	-------------------	-------------------	-------	-------------



[Type Test Certificates/Test Report](#)



[Confirmation](#)

[Miscellaneous](#)

[Environmental Confirmations](#)

Environment
-------------

[Environmental Confirmations](#)

Further information
---------------------

Information on the packaging

<https://support.industry.siemens.com/cs/ww/en/view/109813875>

Information- and Downloadcenter (Catalogs, Brochures,...)

<http://www.siemens.com/lowvoltage/catalogs>

Industry Mall (Online ordering system)

<https://mall.industry.siemens.com/mall/en/en/Catalog/product?mlfb=3KF2316-2LF11>

Service&Support (Manuals, Certificates, Characteristics, FAQs,...)

<https://support.industry.siemens.com/cs/ww/en/ps/3KF2316-2LF11>

Image database (product images, 2D dimension drawings, 3D models, device circuit diagrams, ...)

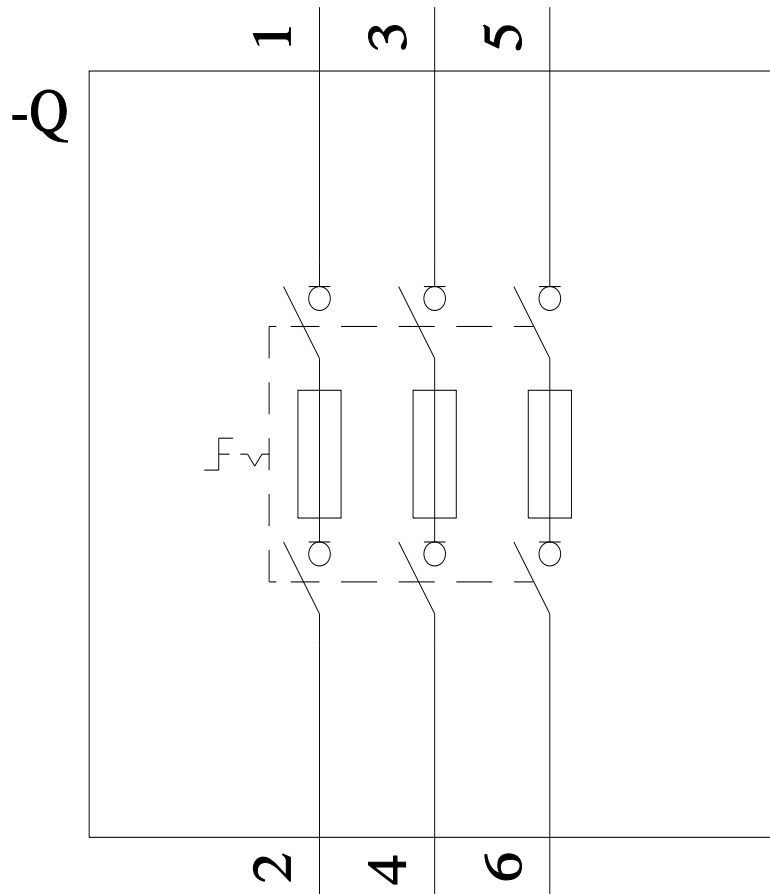
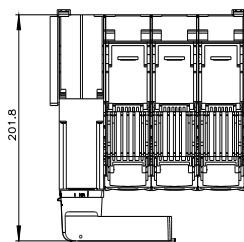
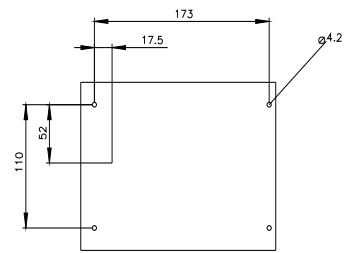
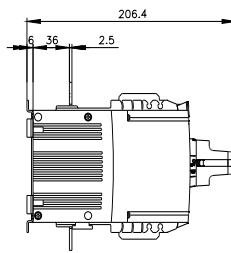
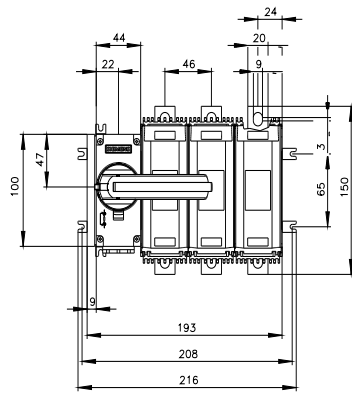
[http://www.automation.siemens.com/bilddb/cax\\_en.aspx?mlfb=3KF2316-2LF11](http://www.automation.siemens.com/bilddb/cax_en.aspx?mlfb=3KF2316-2LF11)

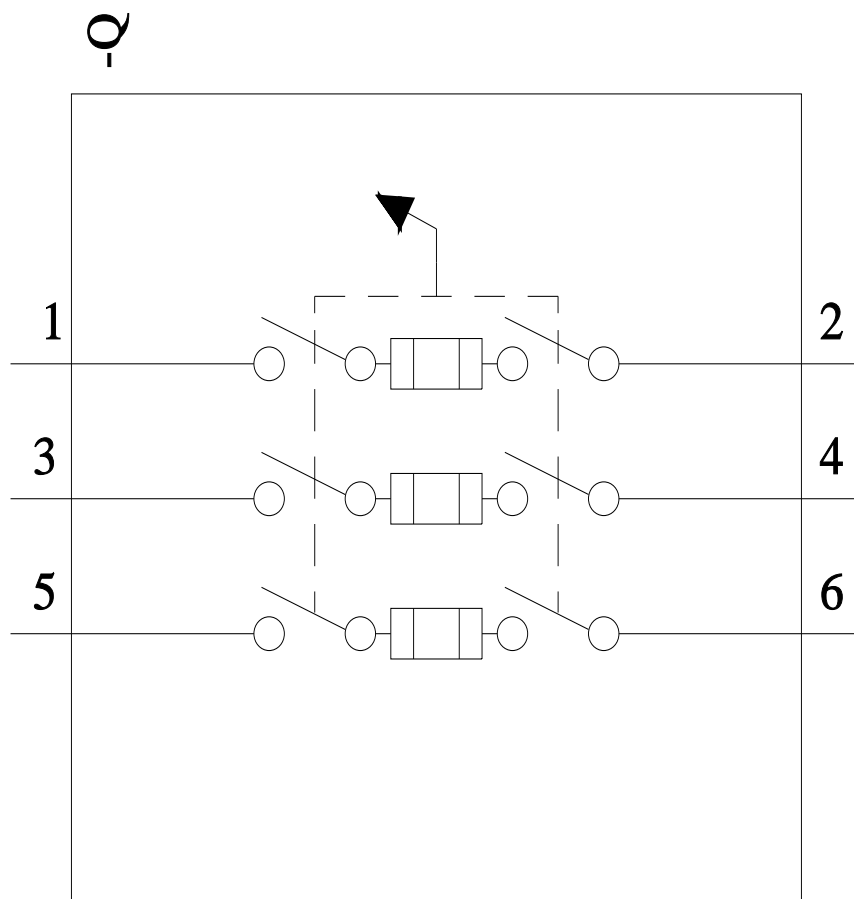
CAX-Online-Generator

<http://www.siemens.com/cax>

Tender specifications

<http://www.siemens.com/specifications>





last modified:

8/2/2022 

